

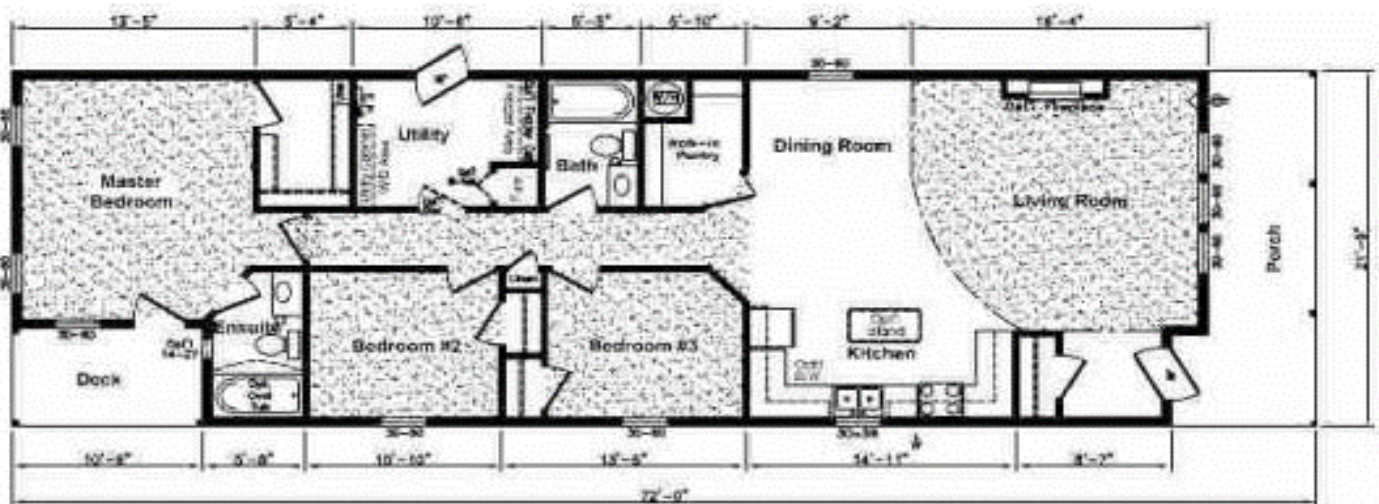


# Pro Modular Housing **Solutions**



## ***Avo-2201A***

**1584 Sq.ft.**



### ***Popular Options:***

*Gas Fireplace  
Stainless Steel Appliances  
Ceramic Tile Backsplash  
Staggered Cabinets  
24" x 48" Island*

*Banjo Counter Top  
5' Shower with Glass Door  
Athens Oval Front Door  
Exterior Pot Lights  
Dormer*



**[www.promodularsolutions.com](http://www.promodularsolutions.com)**

**306-216-6261**



# Pro Modular Housing **Solutions**

## *Avonlea 22' Wide Standards*

### **Exterior:**

30-Year Architectural Fiberglass Shingles  
Engineered Roof Trusses  
Perimeter Eave & Continuous Ridge Venting  
Maintenance Free Full Vinyl Siding  
12" Residential Overhang on 3 Sides  
White Metal Fascia  
8' Walls Ceilings  
2x6 Outside Walls at 16" O.C.  
3/8 OSB Sheathing on Inside & Outside of  
Exterior Walls  
Engineered "I-Joist" Floor System  
Weatherproof Outside Receptacle Protected w/GFI  
Frost Free Tap c/w Check Valve  
White Coach Lights at all Doors & on Front of Home

### **Interior:**

T&G OSB Floor Decking - Glued and Screwed  
R-40 Insulation in Ceiling  
R-20 Insulation in Walls  
R-26 Insulation in Floors  
6 Mil Poly Vapour Barrier in Ceilings & Sidewalls  
Spraytexed 1/2" SR Gyproc Ceilings  
Polyurethane Carpet in Living Room & MBedroom  
No Wax Vinyl Flooring  
Copper Wiring Throughout  
Utility Cabinets Above Washer & Dryer  
Wire Closet Shelving  
Pewter Hardware Package Throughout  
Designer Drapery Package including Blinds  
on all Windows  
Trim Package #2

### **Kitchen:**

18 Cu Ft Two Door Frost Free Fridge - White  
30" Glass Door Electric Range - White  
Single Lever Faucet  
Double Stainless Steel Kitchen Sink  
Two Speed Range hood Vented to exterior  
Rolled Drawer Hardware

### **Bathrooms:**

GFI Receptacle in Bathroom  
Dehumidistat on Main Bath Fan  
One Piece Wall Tub/Shower in Main Bath  
Single Lever Faucets  
White Bath Fixtures  
Shower Rod & Curtain in all Bathrooms  
Pewter Towel Bar and Paper Holder  
Shut-off Valves on All Fixtures

### **Doors:**

36" Steel Insulated Front Door c/w Peephole  
32" Steel Insulated Rear Door c/w Peephole  
Aluminum Storm Doors  
Pre-Finished Interior Doors

### **Windows:**

White PVC "Low E" Windows with Screens

### **Utilities:**

Smoke/CO Alarms with Battery Back Up in Hallway  
Smoke Alarms in All Bedrooms  
40 Gallon Natural GAS Water Heater  
Natural GAS High Efficiency Furnace c/w Electronic  
Ignition  
100 AMP Electric Service Panel  
Electric Conduit Through Floor  
Light Bulb Package

