

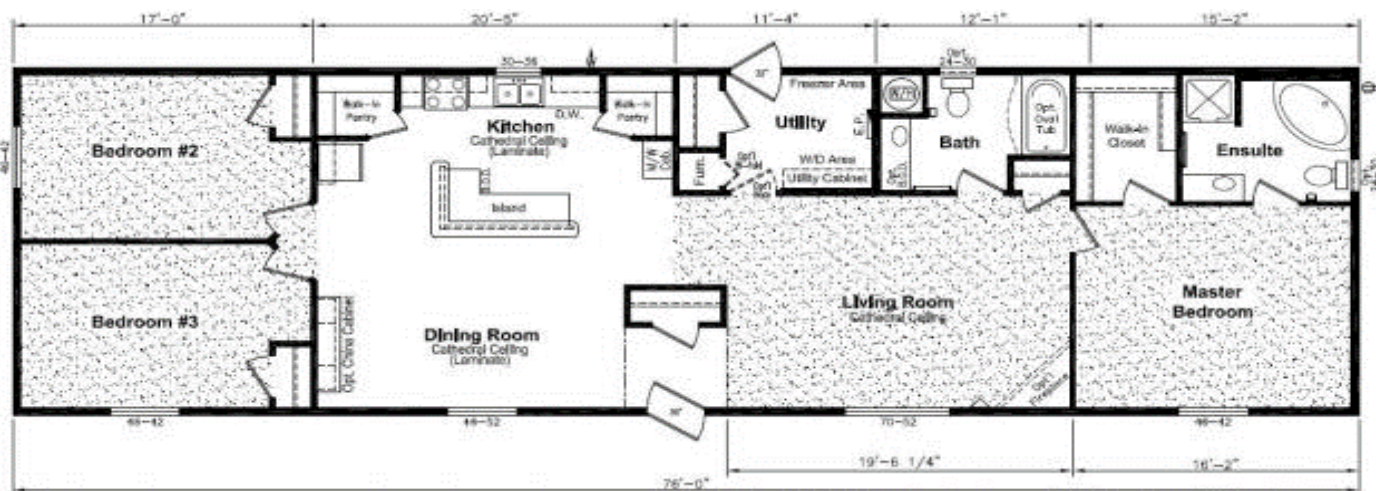


# Pro Modular Housing Solutions



***URB-22762***

**1672 Sq.ft.**



[www.promodularsolutions.com](http://www.promodularsolutions.com)

**306-216-6261**



# Pro Modular Housing **Solutions**

## *Urban 22' Wide Standards*

### **Exterior:**

30-Year Architectural Fiberglass Shingles  
Engineered Roof Trusses  
Perimeter Eave & Continuous Ridge Venting  
Maintenance Free Full Vinyl Siding  
12" Residential Eaves  
8' Walls Ceilings  
2x6 Outside Walls at 16" O.C.  
3/8 OSB Sheathing on Inside & Outside of  
Exterior Walls  
Engineered "I-Joist" Floor System  
Weatherproof Outside Receptacle Protected GFI (2)  
Frost Free Tap c/w Check Valve  
White Coach Lights at all Doors & on Front of Home  
White Metal Fascia

### **Interior:**

T&G OSB Floor Decking - Glued and Screwed  
R-40 Insulation in Ceiling  
R-20 Insulation in Walls  
R-26 Insulation in Floors  
6 Mil Poly Vapour Barrier in Ceilings & Sidewalls  
Spraytexed 1/2" SR Gyproc Ceilings  
100 % Polyurethane Carpet in Living room and  
All Bedrooms  
No Wax Vinyl Flooring  
12.3MM Laminate Flooring in Kitchen & Dining  
Copper Wiring Throughout  
Utility Cabinets Above Washer & Dryer  
Wire Closet Shelving  
Pewter Hardware Package Throughout  
Designer Drapery Package including  
Blinds on all Windows  
Trim Package #2  
Lever Door Handles Throughout  
Cathedral Ceiling in Kitchen, Dining, Living Rooms  
Raised Panel Cabinets Throughout  
Euro Cabinet Pulls Throughout

### **Kitchen:**

18 Cu Ft Two Door Frost Free Fridge - Stainless Steel  
30" Glass Door Electric Range - Stainless Steel  
Dishwasher - Stainless Steel  
Single Lever Faucet  
Double Stainless Steel Kitchen Sink  
Two Speed Range hood Vented to exterior  
Rolled Drawer Hardware  
Bank of Drawers

### **Bathrooms:**

GFI Receptacle in Bathroom  
Dehumidistat on Main Bath Fan  
One Piece Wall Tub/Shower in Main Bath  
Single Lever Faucets  
White Bath Fixtures  
Shower Rod & Curtain in all Bathrooms  
Oval Tub in Ensuite Bathroom  
Separate 36" Shower in Ensuite  
Pewter Towel Bar and Paper Holder  
Shut-off Valves on All Fixtures

### **Doors:**

36" Steel Insulated Front Door c/w Peephole  
32" Steel Insulated Rear Door c/w Peephole  
Aluminum Storm Doors  
White Classique Interior Doors

### **Windows:**

White PVC "Low E" Windows with Screens

### **Utilities:**

Smoke/CO Alarms with Battery Back Up in Hallway  
Smoke Alarms in All Bedrooms  
40 Gallon Electric Water Heater  
Electric Furnace  
200 AMP Electric Service Panel  
Electric Conduit Through Floor  
Light Bulb Package



[www.promodularsolutions.com](http://www.promodularsolutions.com)

**306-216-6261**