



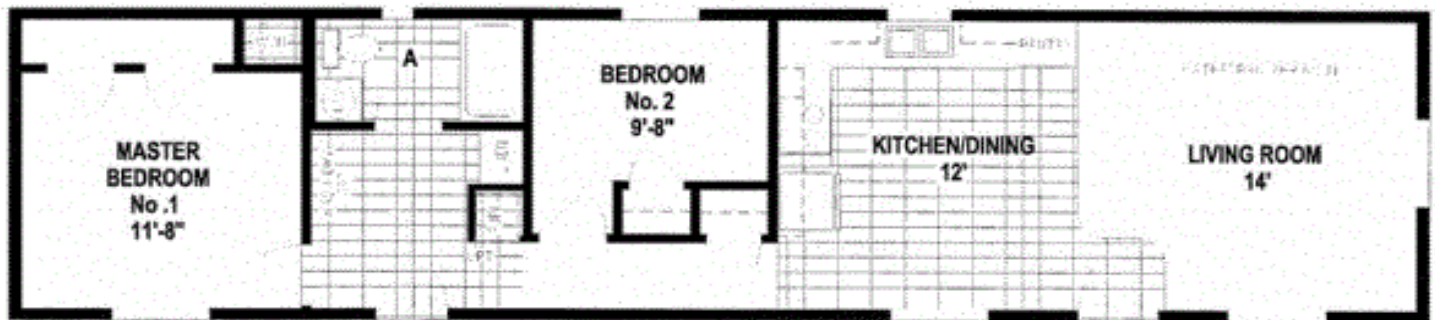
# V I Modular Housing



*\*Pictures above may differ from the floor plan on this brochure.*

## M716CTM 5614

756 sq.ft.



M716CTM/5614 (765 SQ. FT.) 2BEDROOM - CATHEDRAL THRU-OUT



[www.vimodularhomes.com](http://www.vimodularhomes.com)

250-324-2288



# VI Modular Homes

## Bay Springs Single Series Standards

### Living Areas:

Carpet  
52" Ceiling Fan w/Light in Living Room  
Dining Light  
Wood Cornice Valances on All Windows  
except Bathrooms  
Cornice Valance w/Metal Mini-Blinds

### Kitchen:

Your Choice of Three Natural Hardwood Cabinets  
(Oak, Ebusu or Mahogany)  
Residential Hidden Cabinet Door Hinges  
Full Extended Drawer System w/ Ball Bearing Guides  
25 1/2" Deep Countertops w/24" Deep Base Cabinets  
Drawer Over Door Base Cabinet Construction  
Lined Overhead Cabinets w/Adjustable Shelves  
Stainless Steel Sink w/ Single Lever Faucets & Sprayer  
18 cf. Double Door Frost Free Refrigerator  
30" Deluxe Electric Range with Clock & Timer  
Overhead Cabinet Above Refrigerator  
Pantry with Drawer Bank (Per Floor Plan)  
3/4" Adjustable Shelves  
USB Port

### Bathrooms:

Natural Hardwood Trimmed Mirrors with Tulip Lights  
Privacy Locks  
Single Lever Faucet at Sink  
Single Lever Tub/Shower Faucet  
Adjustable Shower Head  
Oak Cabinet Doors with Hardware  
Residential Hidden Cabinet Door Hinges  
Paper Holder and Towel Bars  
Linen Closet in Master Bath per Plan  
Humidistat Vent Fan  
Lavy Drawer Bank Per Floor Plan  
Elongated China Commodes  
Residential Raised Lavvy Base  
Fiberglass Tub/Shower with Master Bathroom  
Fiberglass Tub/Shower Combo in Hall Bathroom  
Lined with Drawer Bank (Per Floor Plan)

### Bedrooms:

Ceiling Lights  
Carpet  
Walk-in Closet (Per Floor Plan)  
Double Ventilated Wire Shelving in Closets  
Metal Mini-Blinds

### Additional Features:

25-Year Shingles (Fiberglass, Class A Fire Rated)  
Hardi CemPlank Vertical Siding  
Cathedral Ceiling Throughout  
4/12 Roof Pitch  
1/2" Tape & Textured Gypsum Walls Throughout  
Residential Baseboard Molding Throughout  
Passage Door Molding, Prefinished Jambs & Hinges  
Linoleum at Entry  
Electric Forced Air Furnace  
Graduated Fiberglass Heat Ducts  
Perimeter Heating  
Toe-Kick Registers in Kitchen & Bathrooms  
40 Gal GAS Water Heater  
Water Shut-off Valve at All Fixtures & Main  
Pex Waterlines  
Plumb for Washer and Wire for Dryer  
Plumb For Ice Maker  
Lever Latch Door Handles  
6 Panel Fiberglass Front & Rear Door w/Deadbolts  
Insulated Low "E" Vinyl Windows  
Egress Windows in Bedrooms  
4" Window Trim  
3/4" Floor Decking  
200 AMP Electrical Service  
7' - 6" Sidewall Height  
2 x 6 Sidewalls, 16" O.C. w/Double 2x6 Top Plate  
2 x 4 Interior Walls, 16" O.C.  
2 x 10 Floor Joists, 16" O.C.  
Double 2 x 10 Perimeter Joists  
73.5# Ground Snow Load - CSA, MH  
Detachable Hitches  
Copper Wiring  
Smoke Detector  
Exterior Receptacle with GFI Breaker  
Exterior Light at All Exterior Doors  
Exterior Frost Free Faucet

*\*The Higher the "R-Value" The Greater the Insulating Power* Code Insulation(R-28 Floor, R-22 Walls, R-40 Ceiling)



[www.vimodularhomes.com](http://www.vimodularhomes.com)

**250-324-2288**

12/23/2013 11:28 PM