



# V I Modular Housing

**\$94,999.00**  
Base Price

**\$5,000 Savings**

**\$89,999.00**  
Display Sale Price Only

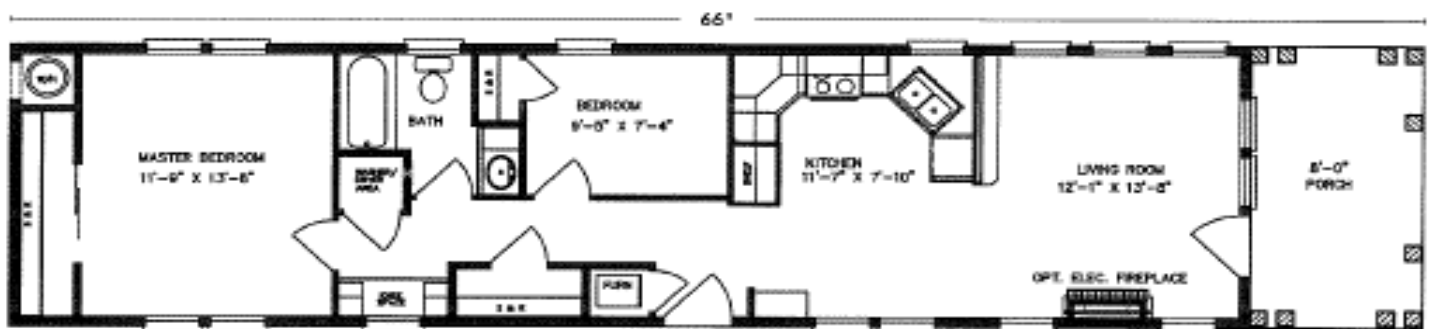


**DISPLAY  
HOME**

*\*Picture above may differ from the floor plan and Options listed on this brochure.*

## Mini Mansion

**850 sq.ft.**



PARADISE III

C.S.A. 4H66S15  
850 SQ.FT.



[www.vimodularhomes.com](http://www.vimodularhomes.com)

**250-324-2288**



# VI Modular *Housing*

## *Park Model Series Standards*

### **Exterior:**

Cem Plank Lap Siding  
Sliding Glass Front Door  
Detachable Hitch  
Dimensional Shingles with Vent a Ridge  
6/12 Roof Pitch  
30# Roof with 6" Eaves  
12' Front and Rear Overhang  
4" Armor Coat Trim  
Hardi Cement Fascia  
Hardi Cement Soffit  
7/16" OSB Sheathing with House Wrap

### **Energy/Structural:**

50 AMP Electrical Service with 25' Cord  
GAS Furnace  
2x4 Exterior Walls, 16" O.C.  
2x6 Floor Joists, 16" O.C.  
Vinyl Low-E Windows  
Perimeter Heat Ducts  
Cathedral Ceiling Throughout  
19/32 Floor Decking  
R-24, R-13, R-13, Insulation (Batt in Floor & Wall)  
Toe Kick Risers in Kitchen and Bathroom

### **Décor:**

Metal Mini-Blinds Throughout  
Laminate Countertops  
Linoleum in all other Areas  
Rebound Carpet Pad  
Denton/Carpet Master Bedroom & Living Room  
Plant Built Window Covering

### **Kitchen/Appliances:**

7" Stainless Steel Kitchen Sink  
Single Lever Moen Kitchen Faucet  
GAS Cooktop  
16 cu.ft. Double Door Refrigerator  
30 Gal Electric Water Heater  
Shut-offs at Fixtures  
Space Maker Microwave Range-Hood  
Refer Overhead Shelf

### **Interior:**

Wood Cabinet Frames  
Shaker Cabinet Doors  
Satin Silver Hardware Finish Throughout  
Cabinet Knobs  
White 6-Panel Interior Doors  
Standard Ceramic Tile Backsplash  
TnT Throughout  
Lever Handles Throughout  
Mirrored Sliding Closet Doors  
Door and Floor Trim  
623 Floor Molding  
356 Door Trim

### **Electrical:**

Exterior Entry Lights (Per Floor Plan)  
Pendent Light (Per Floor Plan)  
TV Jack Living Room and Bedroom  
Recessed Lights (Per Floor Plan)  
Phone Jack in Living Room and Bedroom  
Wire For Fan in Living Room and Bedroom  
Exterior Recepts (2) (Per Floor Plan)

### **Bathrooms:**

48" 1-Piece Shower  
China Lavy Sink  
Moen Dual Handles Lavy Faucet  
Elongated Toilet  
Trimmed Mirror above Sink  
Towel Bar and Tissue Holder

### **Structural:**

10" Steel I-Beam  
7,000 Pound Axles  
3,550 Pound Tires

### **Other:**

CSA Z-241  
CWB Frame  
Perimeter Ducts (Per Floor Plan)  
Fire Extinguisher  
Smoke Detectors & Propane Detector  
(Per Floor Plan)

