

2014



PRO MODULAR HOUSING SOLUTIONS

**A Division of
V.I. Modular Homes Ltd.**

**Robert Matthews ~ President
Chris Andersen ~ General Manager**



www.promodularsolutions.com

250-324-2288



Pro Modular Housing Solutions

Division of V.I. Modular Homes Ltd.

A Division of V.I. Modular Homes Ltd, Pro Modular Housing Solutions is a Western Canadian Modular focused builder with expertise in single and multi family project applications.

Our access to significant financial resources during construction and P3 project financing through our associate Commonwealth Group, ensures on time project completion without the stress of cost overruns due to delays.

Our highly experienced management team and extensive sub trade connections provide confidence that the housing unit(s) or project progresses on time and on budget.

By working with several different Modular Builder factories, we can ensure that the price and delivery requirements are attained.





Pro Modular Housing Solutions

Division of V.I. Modular Homes Ltd.

Management Team

Our Management Team's lifelong commitments to building homes and construction projects of all sizes and types is what sets us apart. Each brings 30+ years of construction background with a large network of trades & supplier contacts, coupled with strong financial backing. The best form of advertising is the recommendations of the people we have worked for, and worked with, throughout the years.



***Rob
Matthews
President***

Leading the business growth by ensuring only the most qualified industry professionals are on the team.



***Chris
Andersen
General
Manager***

Chris is an active advocate of the Modular Construction Industry and has served on Canadian Modular Housing Association boards for several years, including 2 as president of the Prairies Association. He is also a recognized resource for the National Building Code Committee.



***Michael
McLean
Sales &
Marketing
Manager***

Every business needs a passionate and focused Sales leader to drive the opportunities and communicate our abilities to our customers and partners through our sales network. Michael's success with start up and struggling businesses ensures we aren't risking our own or our partners investment capital.



***Mark
Anderson
Business
Development***

Connections are key to a company's success. Mark makes easy work of directing our company's focus towards projects and partnerships that make sense to everyone involved. In a world where trust is often questioned, Mark ensures that our prospective and current corporate opportunities remain realistic and under control.



www.promodularsolutions.com

250-324-2288



Pro Modular Housing Solutions

Division of V.I. Modular Homes Ltd.

When You Think Modular.....

Do you Think This?



Or This?



Although the single section model is still a popular affordable housing option, the diversity of available styles continues to grow, as does the architectural complexities.

Even though the “trailers” of the 60s and 70s were not intended for livability beyond 35 years, the vast majority continue to be inhabited today, well past their intended lifespan.

Since the early nineties, modular construction has been using the exact same building code as site built. Today’s moduls will last as long or longer than site built homes will.

Unfortunately many people, including those who should know better such as the occasional banker, appraiser, realtor, and inspector, still believe a modular built home is inferior to a site built home. In reality, Modular construction creates a much stronger and better built home, often costing 20% less to build than the same site built home would.



www.promodularsolutions.com

250-324-2288



Pro Modular Housing Solutions

Division of V.I. Modular Homes Ltd.

What is Modular Construction



- 🏠 *Simply stated, Modular is a way of constructing, not a type of building, just as stick built is a way of constructing.*
- 🏠 *Both Modular and stick built use the same building code in all aspects of construction.*
- 🏠 *Modular construction is highly engineered, quality regulated and inspected using a CSA approved standard.*
- 🏠 *Modular construction makes up between 11% and 35% of new residential and accommodation construction in North America.*
- 🏠 *Modular construction leaves a much smaller overall carbon footprint than traditional site building methods.*
- 🏠 *Modular construction reduces waste by up to 70% compared to site building.*
- 🏠 *In many parts of the world, Modular construction methods have surpassed site built as a preferred way to build.*









Pro Modular Housing Solutions

Division of V.I. Modular Homes Ltd.

Timeliness



Modular construction takes place at the same time as the foundation/servicing does.

-  *The building arrives about 90-95% completed.*
-  *Onsite finishing can be accomplished in as little as 3 weeks once the building is placed on the foundation.*
-  *Total time from contract to possession is typically 6-10 weeks, depending on the site required assemblies.*
-  *Impact on the neighborhood is significantly reduced.
(noise pollution, traffic, waste)*








Pro Modular Housing Solutions

Division of V.I. Modular Homes Ltd.

Single Section Homes

A single section manufactured home is constructed using the same building code requirements as site built. It is certified to the same standards that all other modular constructed residential houses are certified to.

The biggest difference is that almost all single section manufactured homes will have the furnace and water heater on the main floor, a heavy structural steel longitudinal supporting frame system, and floor insulation.

-  *They are available in widths of 12', 14', 16', 18', 20', 22' and even 24'.*
-  *Lengths can be from 32' up to 76'.*
-  *Road width, bridge capacities, and other factors may limit how big a home that can be transported to a development.*





Pro Modular Housing Solutions

Division of V.I. Modular Homes Ltd.

Single Section Homes



**** Just a few Samples of what we can offer You.**



www.promodularsolutions.com

250-324-2288



Pro Modular Housing Solutions

Division of V.I. Modular Homes Ltd.

Single Section Homes Interior Pictures



www.promodularsolutions.com

250-324-2288







Pro Modular Housing Solutions

Division of V.I. Modular Homes Ltd.

Multi Module Homes

A multiple section modular home is constructed using the same building code requirements as site built. It is certified by the CSA A277 modular construction standards to be compliant to all building codes.

A modular home can be built to be placed on a basement, a crawlspace, or utilize a heavy structural steel longitudinal supporting frame system on top of blocking or pilings.

-  *They are available from 24' up to 42' in width.*
-  *Lengths can be from 32' up to 76'.*
-  *Heights up to Two story High.*
-  *Road width, bridge capacities, and other factors may limit how big a home that can be transported to a development.*



www.promodularsolutions.com

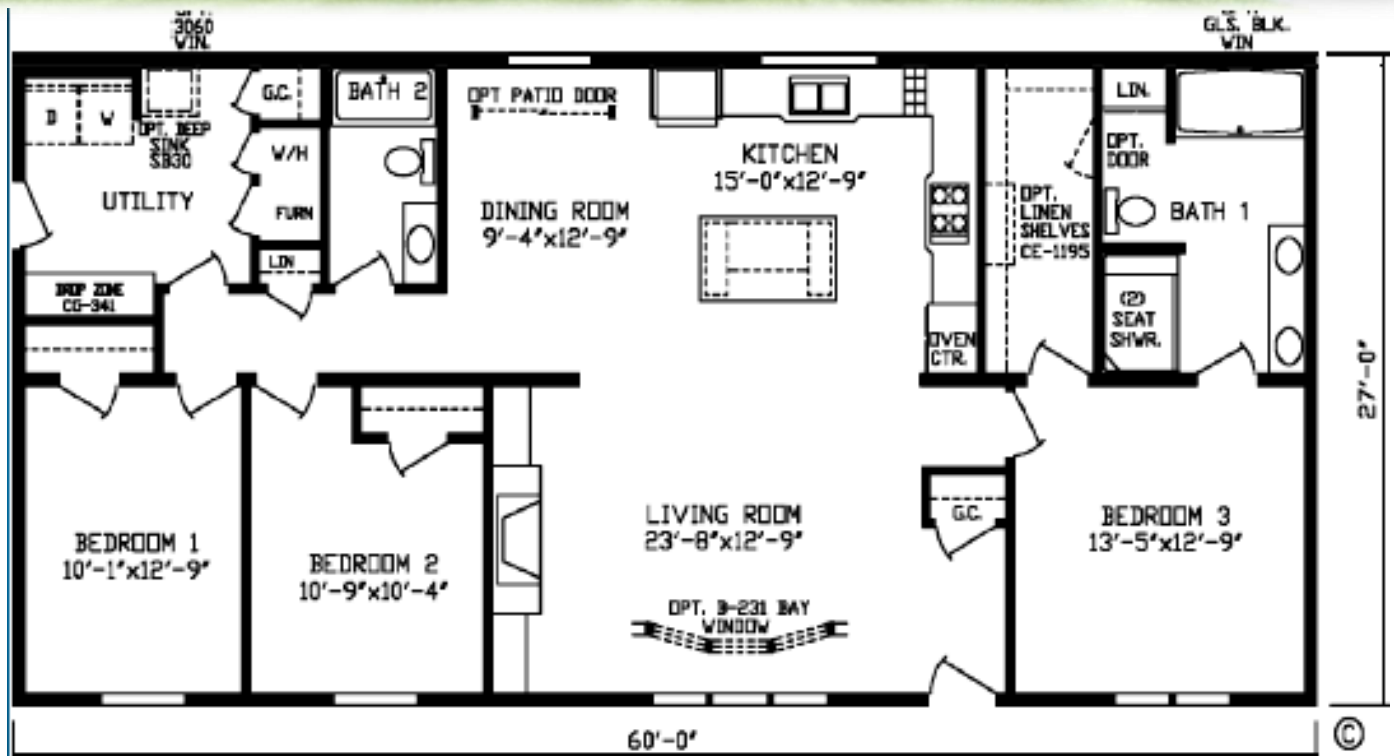
250-324-2288



Pro Modular Housing Solutions

Division of V.I. Modular Homes Ltd.

Multi Module Homes



**** Just a Sample of what we can offer You.**



www.promodularsolutions.com

250-324-2288



Pro Modular Housing Solutions

Division of V.I. Modular Homes Ltd.

Multi Module Homes Interior Pictures



www.promodularsolutions.com

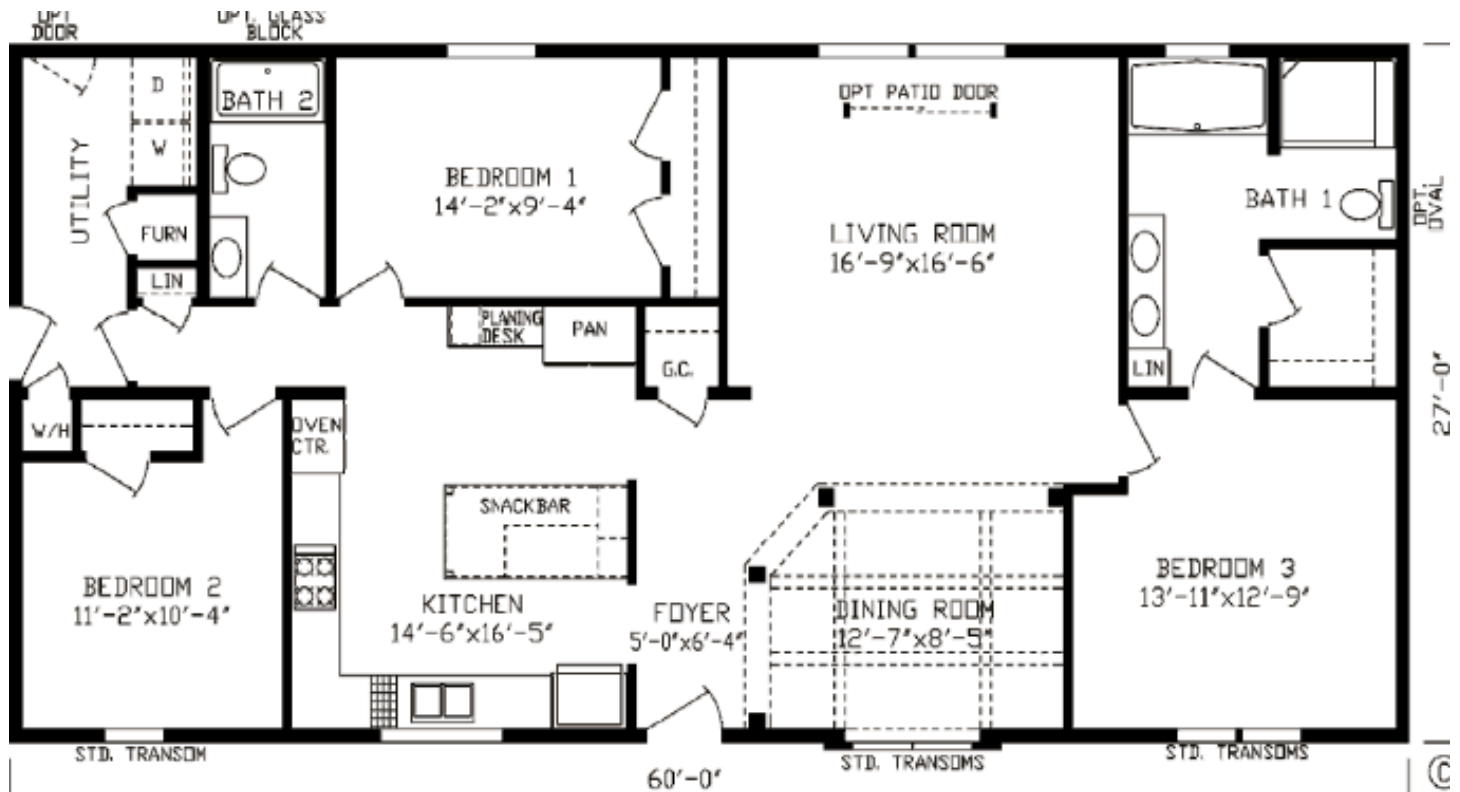
250-324-2288



Pro Modular Housing Solutions

Division of V.I. Modular Homes Ltd.

Multi Module Homes



**** Just a Sample of what we can offer You.**



www.promodularsolutions.com

250-324-2288



Pro Modular Housing Solutions

Division of V.I. Modular Homes Ltd.

Multi Module Homes Interior Pictures



www.promodularsolutions.com

250-324-2288

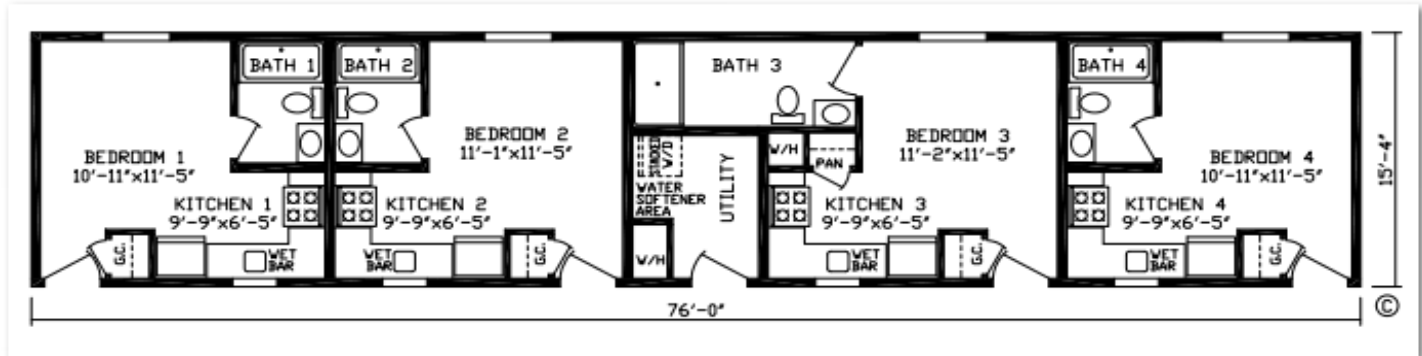


Pro Modular Housing Solutions

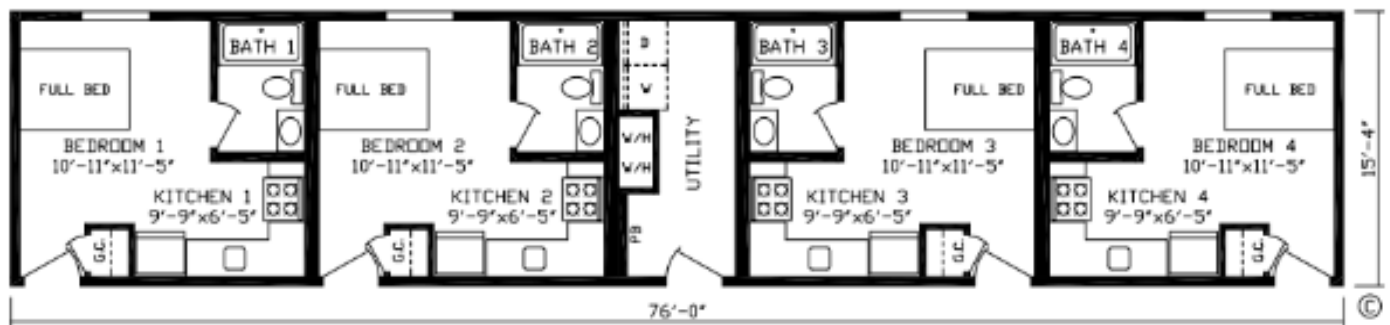
Division of V.I. Modular Homes Ltd.

Work Force Housing Plans

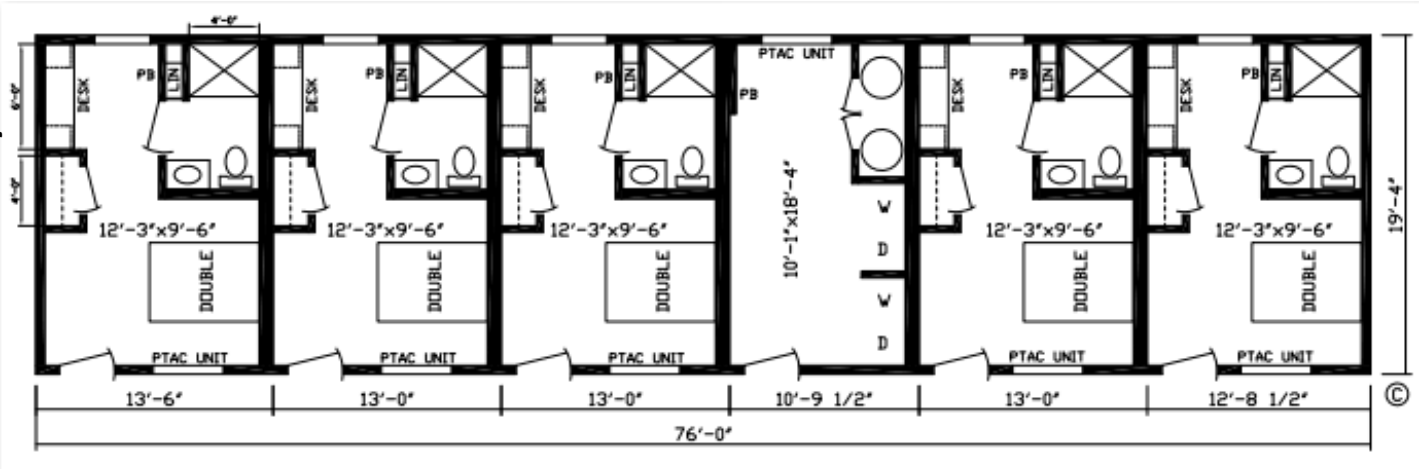
16 x 76 4 Bedroom A



16x 76 4 Bedroom
with Laundry C



20 x 76 5 Bedroom
with Laundry B



**** Just a few Samples of what we can offer You.**



www.promodularsolutions.com

250-324-2288



Pro Modular Housing Solutions

Division of V.I. Modular Homes Ltd.

Work Force Housing Interior Pictures



www.promodularsolutions.com

250-324-2288



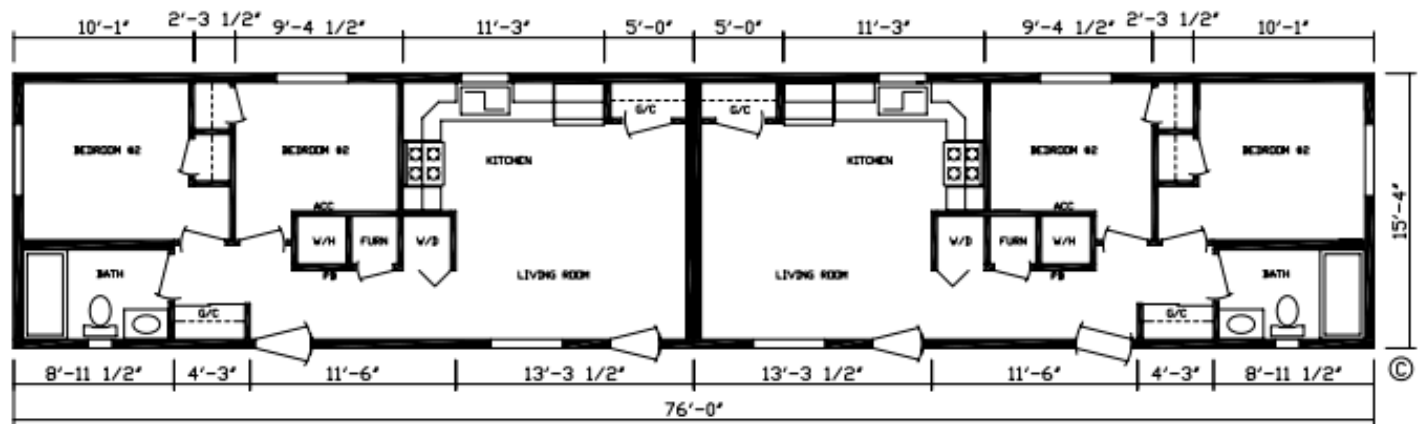
Pro Modular Housing Solutions

Division of V.I. Modular Homes Ltd.

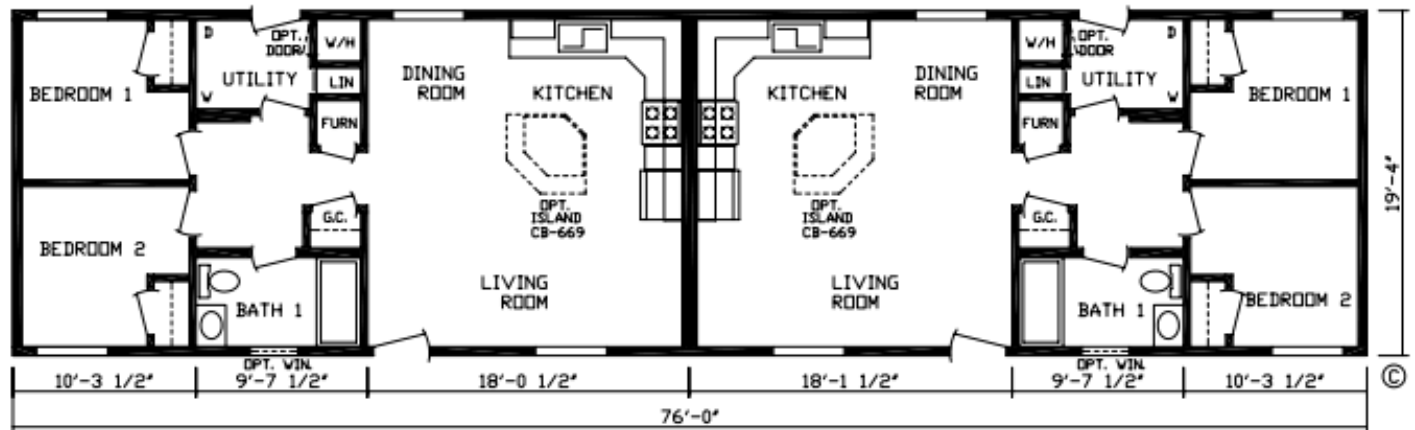
Duplex Housing Plans



16 x 76 Duplex A



20 x 76 Duplex A



**** Just a few Samples of what we can offer You.**



www.promodularsolutions.com

250-324-2288

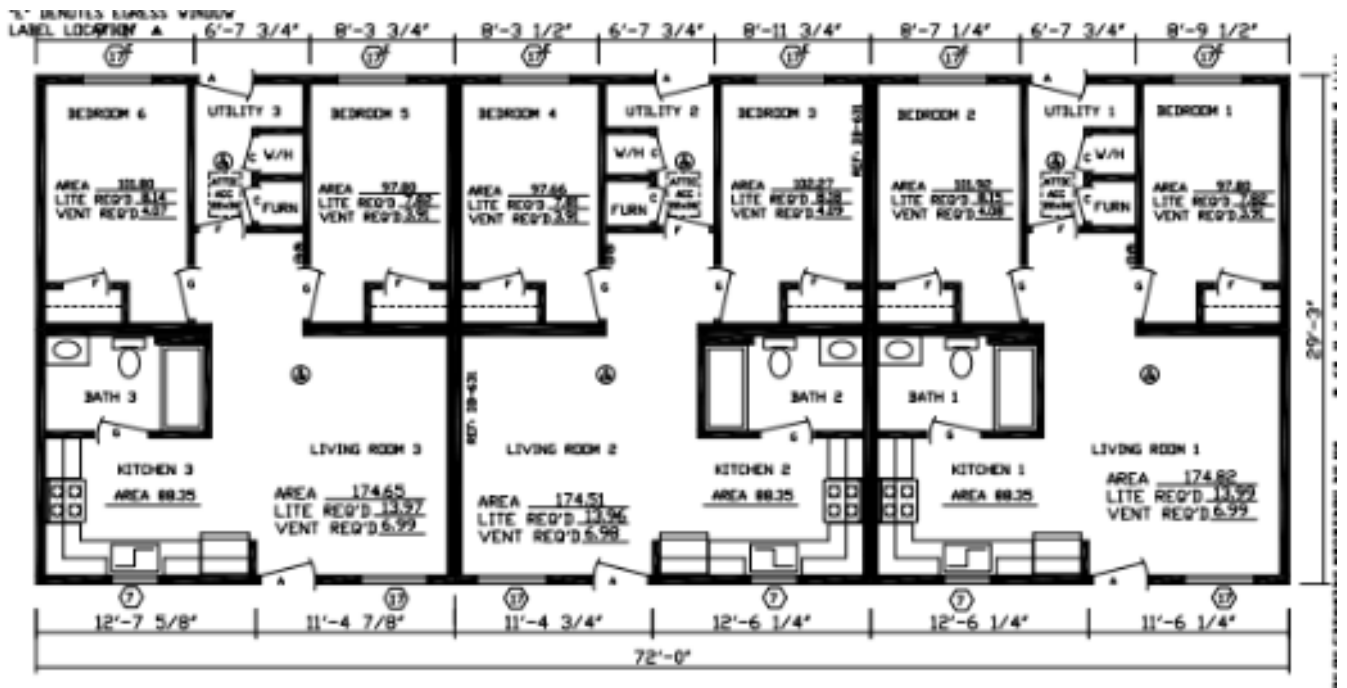


Pro Modular Housing Solutions

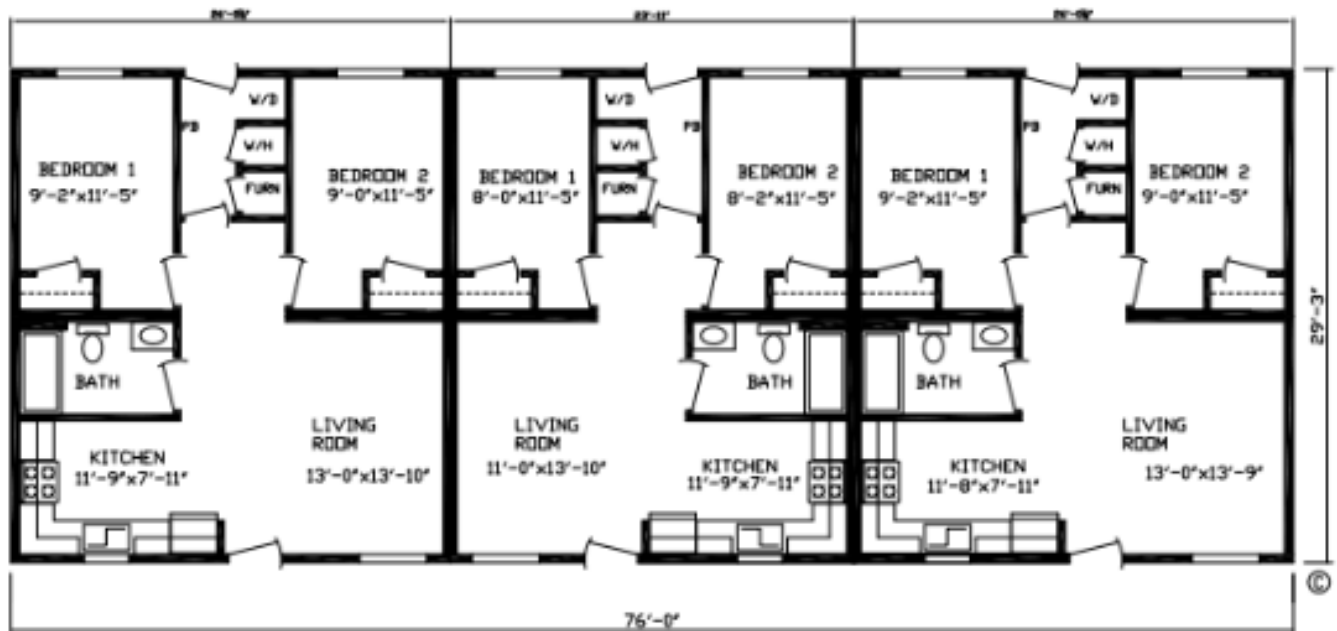
Division of V.I. Modular Homes Ltd.

Triplex Housing Plans

16 x 76 Triplex A



20 x 76 Triplex B



**** Just a few Samples of what we can offer You.**



www.promodularsolutions.com

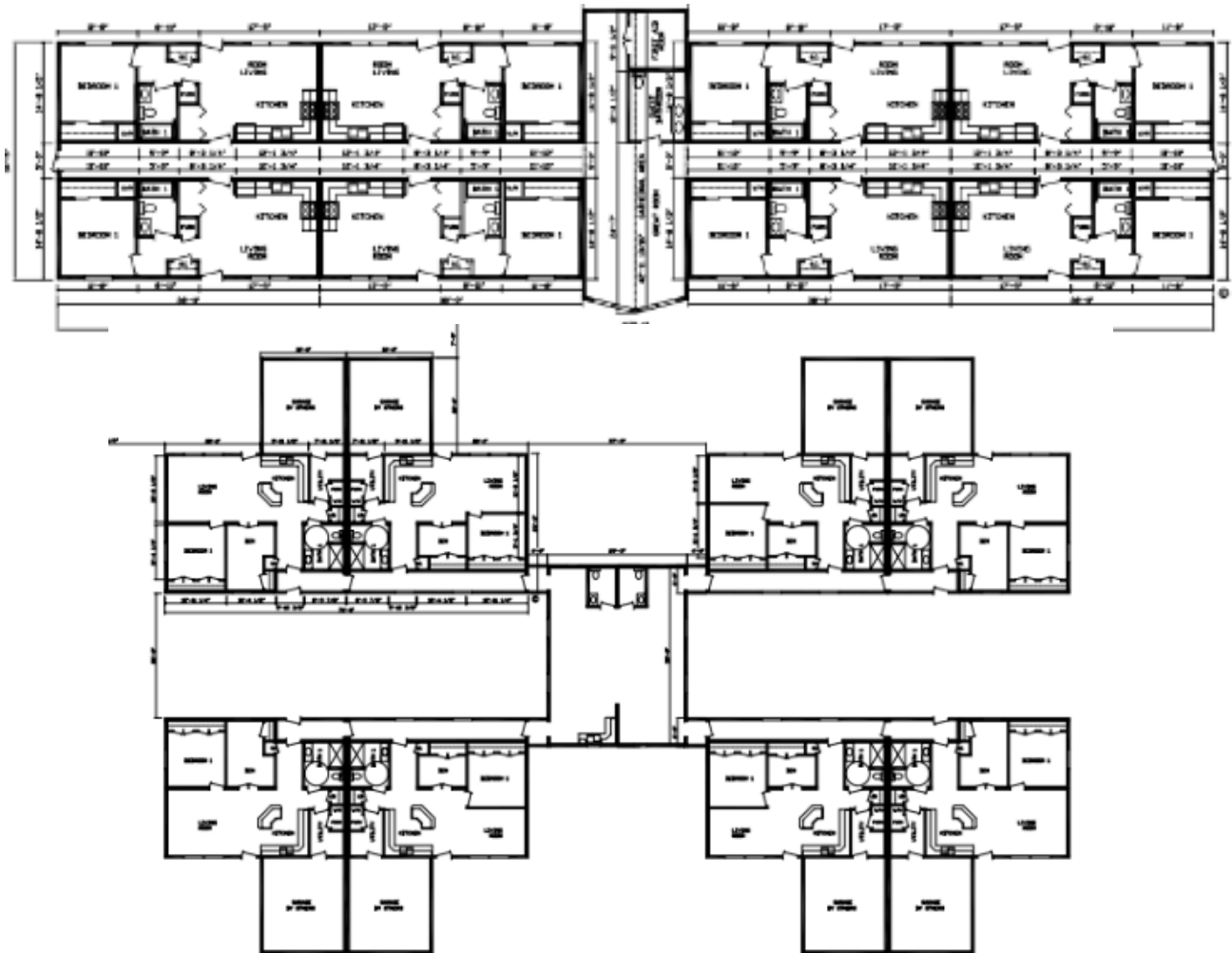
250-324-2288



Pro Modular Housing Solutions

Division of V.I. Modular Homes Ltd.

Assisting Living Housing Plans



**** Just a few Samples of what we can offer You.**



www.promodularsolutions.com

250-324-2288



Pro Modular Housing Solutions

Division of V.I. Modular Homes Ltd.

Apartments



www.promodularsolutions.com

250-324-2288



Pro Modular Housing Solutions

Division of V.I. Modular Homes Ltd.

Townhomes



www.promodularsolutions.com

250-324-2288



Pro Modular Housing Solutions

Division of V.I. Modular Homes Ltd.

Townhomes



www.promodularsolutions.com

250-324-2288



Pro Modular Housing Solutions

Division of V.I. Modular Homes Ltd.

Condos



www.promodularsolutions.com

250-324-2288



Pro Modular Housing Solutions

Division of V.I. Modular Homes Ltd.

Condos



Roof Top



www.promodularsolutions.com

250-324-2288



Pro Modular Housing Solutions

Division of V.I. Modular Homes Ltd.

Health Clinics

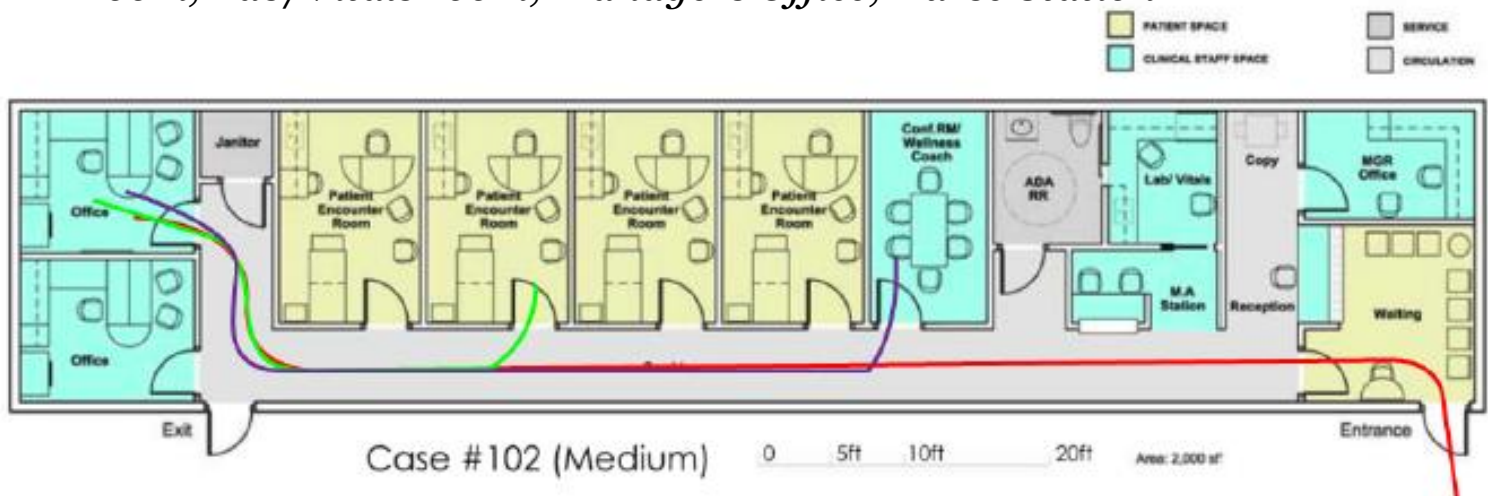
Patients: ~ 20 a day - 10 hrs of operation per day, 2 doctors and 2 exam rooms each

Users and Nature of Activity:

- 2 doctors
- 2 Nurses/M.As
- 1 Manager
- 1 Receptionist
- 1 Janitor

Facility:

- Total Area 2000 Sq. Ft
- 4 Patient Encounter Rooms: 150 sq. ft
- Corridor: 5 Ft wide, and 72.5 sq. ft long
- Waiting room : Seating capacity of 7 patient
- Other rooms: 2 Doctors Offices, Janitors room, ADA Rest Room, Lab/Vitals room, Managers Office, Nurse Station



**** Just a few Samples of what we can offer You.**



www.promodularsolutions.com

250-324-2288



Pro Modular Housing Solutions

Division of V.I. Modular Homes Ltd.

Foundation Types



**Insulated Concrete
Forms (ICF)**



**Traditional Formed
Concrete**



**Screw
Piling**



**Surface
Foundation
System**

**** Just a few Samples of what we can offer You.**



www.promodularsolutions.com

250-324-2288



Pro Modular Housing Solutions

Division of V.I. Modular Homes Ltd.

Installation of Homes

~ Trucking~



~ Craning~



~ Set up~



Specialized transport equipment ensures the roads and development are minimally impacted by the delivery and setup process. On site setup time is reduced by about 75% compared to site built methods



www.promodularsolutions.com

250-324-2288



Pro Modular Housing Solutions

Division of V.I. Modular Homes Ltd.

Conclusion

Pro Modular Housing Solutions,

A Division of V I Modular Homes Ltd

has the experience, financial
ability, extensive contractor network, and a
proven track record
in all aspects of modular housing.

Total customer satisfaction is always the
first priority.

Working exclusively with manufacturers, transporters and
trades who share this vision:

We can commit fully to
doing it right the first time!

Vancouver Island Head Office
9534 Trans Canada Hwy Chemainus, BC VoR 1K4



www.promodularsolutions.com

250-324-2288