



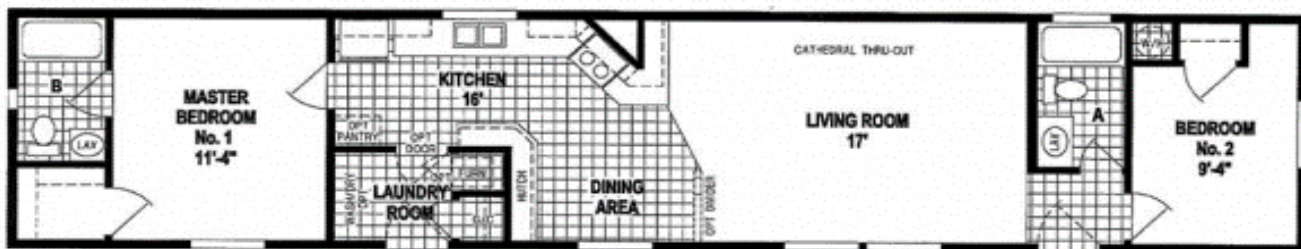
VI Modular Housing



**Pictures above may differ from the floor plan on this brochure.*

M731CTM 6714

915 sq.ft.



M731CTM/6714 (915 SQ. FT.) 2BEDROOM - 2BATHS - CATHEDRAL THROUGH-OUT
M731MM/6714 (915 SQ. FT.) 2BEDROOM - 2BATHS - CATHEDRAL THROUGH-OUT

OPTION BAY



www.vimodularhomes.com

250-324-2288



VI Modular Homes

Bay Springs Single Series Standards

Living Areas:

Carpet
52" Ceiling Fan w/Light in Living Room
Dining Light
Wood Cornice Valances on All Windows
except Bathrooms
Cornice Valance w/Metal Mini-Blinds

Kitchen:

Your Choice of Three Natural Hardwood Cabinets
(Oak, Ebusu or Mahogany)
Residential Hidden Cabinet Door Hinges
Full Extended Drawer System w/ Ball Bearing Guides
25 1/2" Deep Countertops w/24" Deep Base Cabinets
Drawer Over Door Base Cabinet Construction
Lined Overhead Cabinets w/Adjustable Shelves
Stainless Steel Sink w/ Single Lever Faucets & Sprayer
18 cf. Double Door Frost Free Refrigerator
30" Deluxe Electric Range with Clock & Timer
Overhead Cabinet Above Refrigerator
Pantry with Drawer Bank (Per Floor Plan)
3/4" Adjustable Shelves
USB Port

Bathrooms:

Natural Hardwood Trimmed Mirrors with Tulip Lights
Privacy Locks
Single Lever Faucet at Sink
Single Lever Tub/Shower Faucet
Adjustable Shower Head
Oak Cabinet Doors with Hardware
Residential Hidden Cabinet Door Hinges
Paper Holder and Towel Bars
Linen Closet in Master Bath per Plan
Humidistat Vent Fan
Lavy Drawer Bank Per Floor Plan
Elongated China Commodes
Residential Raised Lavvy Base
Fiberglass Tub/Shower with Master Bathroom
Fiberglass Tub/Shower Combo in Hall Bathroom
Lined with Drawer Bank (Per Floor Plan)

Bedrooms:

Ceiling Lights
Carpet
Walk-in Closet (Per Floor Plan)
Double Ventilated Wire Shelving in Closets
Metal Mini-Blinds

Additional Features:

25-Year Shingles (Fiberglass, Class A Fire Rated)
Hardi CemPlank Vertical Siding
Cathedral Ceiling Throughout
4/12 Roof Pitch
1/2" Tape & Textured Gypsum Walls Throughout
Residential Baseboard Molding Throughout
Passage Door Molding, Prefinished Jambs & Hinges
Linoleum at Entry
Electric Forced Air Furnace
Graduated Fiberglass Heat Ducts
Perimeter Heating
Toe-Kick Registers in Kitchen & Bathrooms
40 Gal GAS Water Heater
Water Shut-off Valve at All Fixtures & Main
Pex Waterlines
Plumb for Washer and Wire for Dryer
Plumb For Ice Maker
Lever Latch Door Handles
6 Panel Fiberglass Front & Rear Door w/Deadbolts
Insulated Low "E" Vinyl Windows
Egress Windows in Bedrooms
4" Window Trim
3/4" Floor Decking
200 AMP Electrical Service
7' - 6" Sidewall Height
2 x 6 Sidewalls, 16" O.C. w/Double 2x6 Top Plate
2 x 4 Interior Walls, 16" O.C.
2 x 10 Floor Joists, 16" O.C.
Double 2 x 10 Perimeter Joists
73.5# Ground Snow Load - CSA, MH
Detachable Hitches
Copper Wiring
Smoke Detector
Exterior Receptacle with GFI Breaker
Exterior Light at All Exterior Doors
Exterior Frost Free Faucet

**The Higher the "R-Value" The Greater the Insulating Power* Code Insulation(R-28 Floor, R-22 Walls, R-40 Ceiling)



www.vimodularhomes.com

250-324-2288